

Spotnicks 1988

~ HOOT OWL ~

Peter Wiberg

(2.58)

SOLOGITARR

Intro/Bridge

Dm Am7 Dm Dm vib. C G C C vib.

1/2 pizz ----- loco "poco"!

Dm Dm Am C A Dm v. F v. N N/v.

↑ synt

0 7 1 1 1 3 4 3 4

G v. v. Gm F v. Eb v.

4 3 4 4 4 1 3 1

Dm v. F v. N N/v. G v. v.

1 5 1 3 4 3 4 4 3 4

Gm v. Asust A B Bb C 1 2 1

4 3 3 1 3 1 (2x: Bb C) 2 2x(7)

Am v. Bb v. Am N N v. Gm Am G v.

(2x: D-) (2x: Bb C) 2x(7) 3

Asust A Bb v. C Am vib. Bb v.

(2x: D E) F. D E F min E E 3 (2x: D E)

Gm v. Am G v. Gm

(2x: F F Bb D F) 3 1

• Da Capo X)  
Sen (new)  
• Da Capo (up)  
al ♯

Hoot Owl  
Sologit.

Dm C/D B<sup>b</sup>/D

1/2 Pizz

C/D Dm



Original:

x) vid Da Capo - steelgitar solo i 16 takter!

fån (Dm Spotnicks Underwater) 1988

Insp. #1 = David Palmer (Juri Wiik, sologit.

"Magic Guitar  
Sound"

1984/86

P. Wiberg, sepet,  
m.fl. ur Spotnicks ...!

Spotnicks 1988 ~ HOOT OWL ~  
(2.58)

Peter Wiberg

Intro/Bridge

Kompit.

Handwritten musical notation for the first system, featuring a guitar part (Kompit.) and a bass part (Elbas). The guitar part has a treble clef and a key signature of one flat. The bass part has a bass clef and a key signature of one flat. The guitar part includes chords: Dm, A7Dm, Dm, C, G, C, C. The bass part includes a melodic line with rests and slurs.

Handwritten musical notation for the second system, featuring a guitar part and a bass part. The guitar part has a treble clef and a key signature of one flat. The bass part has a bass clef and a key signature of one flat. The guitar part includes chords: Dm, A7Dm, Dm, C, G, C, C. The bass part includes a melodic line with rests and slurs.

Handwritten musical notation for the third system, featuring a guitar part and a bass part. The guitar part has a treble clef and a key signature of one flat. The bass part has a bass clef and a key signature of one flat. The guitar part includes chords: Dm, Dm, Am, C, Dm, and the word "simile". The bass part includes a melodic line with rests and slurs.

Handwritten musical notation for the fourth system, featuring a guitar part and a bass part. The guitar part has a treble clef and a key signature of one flat. The bass part has a bass clef and a key signature of one flat. The guitar part includes chords: F, G, Gm. The bass part includes a melodic line with rests and slurs.

Handwritten musical notation for the fifth system, featuring a guitar part and a bass part. The guitar part has a treble clef and a key signature of one flat. The bass part has a bass clef and a key signature of one flat. The guitar part includes chords: F, Eb, Dm. The bass part includes a melodic line with rests and slurs.

Handwritten musical notation for the sixth system, featuring a guitar part and a bass part. The guitar part has a treble clef and a key signature of one flat. The bass part has a bass clef and a key signature of one flat. The guitar part includes chords: F, G. The bass part includes a melodic line with rests and slurs.

Hoot Owl  
 - kompgit  
 - elbas

Handwritten musical notation for the first system. The treble clef staff contains chords: Gm, Asus<sup>4</sup>, A, B<sup>b</sup>, and C. A box labeled 'B' is above the B<sup>b</sup> chord. The bass clef staff contains a melodic line with a bracketed annotation [Bm] under the first measure.

Handwritten musical notation for the second system. The treble clef staff contains chords: Am, B<sup>b</sup>, B<sup>b</sup> Am, Gm, and Am. The bass clef staff contains a melodic line with '+' signs under the first and fifth measures.

Handwritten musical notation for the third system. The treble clef staff contains chords: G, Asus<sup>4</sup>, A, B<sup>b</sup>, and G. The bass clef staff contains a melodic line with '+' signs under the first and third measures.

Handwritten musical notation for the fourth system. The treble clef staff contains chords: Am, B<sup>b</sup>, B<sup>b</sup> Am, Gm, and Am. The bass clef staff contains a melodic line with '+' signs under the first and fifth measures.

Handwritten musical notation for the fifth system. The treble clef staff contains chords: G and Gm. The bass clef staff contains a melodic line with '+' signs under the first and third measures.

Repris  
 och sen / Da Capo  
 al  $\phi$

Handwritten musical notation for the sixth system. The treble clef staff contains chords: Dm, C/D, B<sup>b</sup>/D, C/D, and Dm. The bass clef staff contains a melodic line with '+' signs under the first and third measures.

från "Spotnicks Undimite" 2.

Spotnicks 1988  
(2.58)

~ HOT OWL ~

P. Wiberg

SYNT

Intro/Bridge "klaverlyp"

Handwritten musical notation for the first system. The treble clef staff contains notes and chords: Dm, Am7, Dm, Dm, C, G, C, C. The bass clef staff contains notes and a bracketed section labeled "Langa Akkord (stråk)" with a "simile" marking.

Handwritten musical notation for the second system. The treble clef staff contains notes and chords: Dm, Am7, Dm, Dm, C, G, C, C. The bass clef staff is mostly empty with a few notes.

Handwritten musical notation for the third system. The treble clef staff contains notes and chords: Dm, Dm, Am, C, Dm, and a section marked "simile...". A bracket labeled "stråk" is above the Am and C chords. The bass clef staff contains notes and chords: Dm, Dm, Am, C, Dm, and a section marked with a slash.

Handwritten musical notation for the fourth system. The treble clef staff contains chords: F, G, Gm. The bass clef staff is empty.

Handwritten musical notation for the fifth system. The treble clef staff contains chords: F, Eb, Dm, and a section marked with a slash. The bass clef staff is empty.

Handwritten musical notation for the sixth system. The treble clef staff contains chords: F, G, and a section marked with a slash. The bass clef staff is empty.

Hot Owl  
- Synt

B

Musical staff with chords: Gm, Asus<sup>4</sup>, A, Bb, C

Musical staff with chords: Am, Bb, Bb, Am, Gm, Am

Musical staff with chords: G, Asus<sup>4</sup>, A, Bb, C. Annotations: "Klover" above the A chord, "Strak" below the Bb chord.

Musical staff with chords: Am, Bb, Bb, Am, Gm, Am

Musical staff with chords: G, Gm. Lyrics: • Kepis, sen  
• Da Capa d'

Musical staff with chords: Dm, C/D, Bb/D, C/D, Dm. Annotations: "Klover" above the first C/D, "Strak" above the first Bb/D, "Strak" above the final Dm.

Spotnicks 1988

~ HOOT OWL ~

**DRUMMER**

Intro

F.T. Fill...4

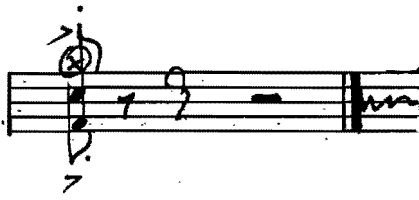
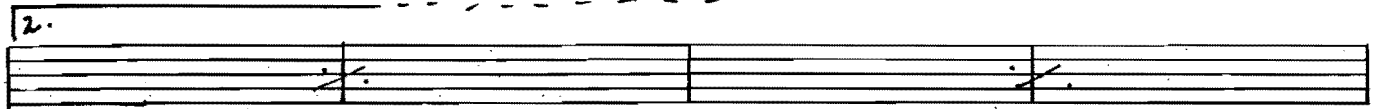
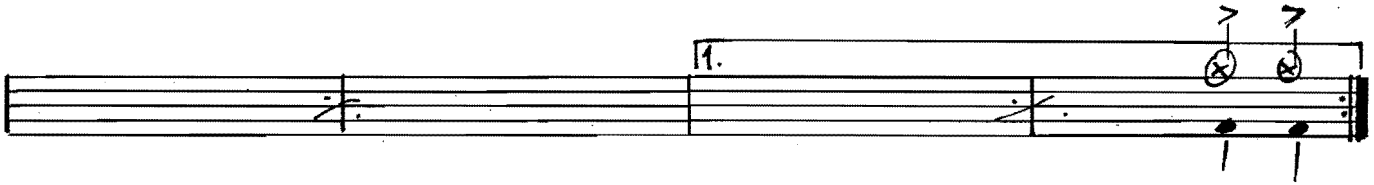
Fill...4

A

B

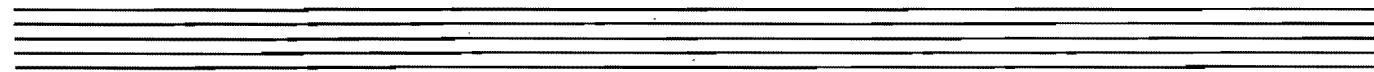
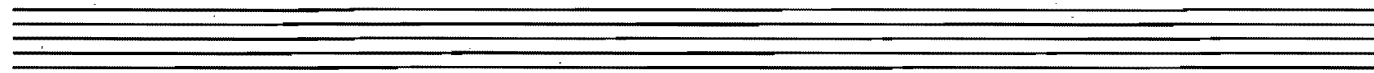
Bridge

Hoot Owl  
Tr.



x) eller som Intro. = Tom-Tom

(Insp. "D. Palmer")



Dr.